

**Investigation report n° 28465**

Bové RJM Overpelt, 25 feb 2016

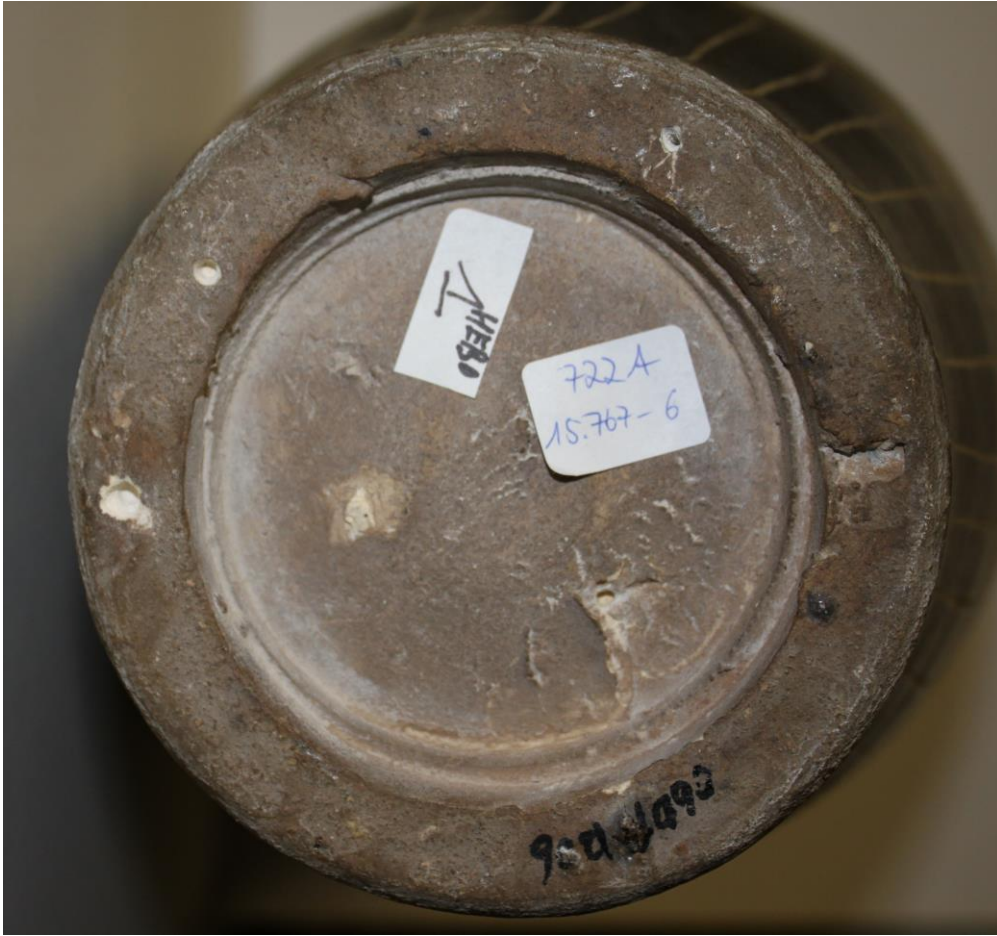
Attn: Mr. Ralf Kotalla  
Labor Kotalla  
Kätzling 2  
D-72401 Haigerloch  
GERMANY

Object: Jar  
Identification :722A 15,767-6

Description: Chinese jar with crème ground and painting in dark brown. No marks.



**Observations:**



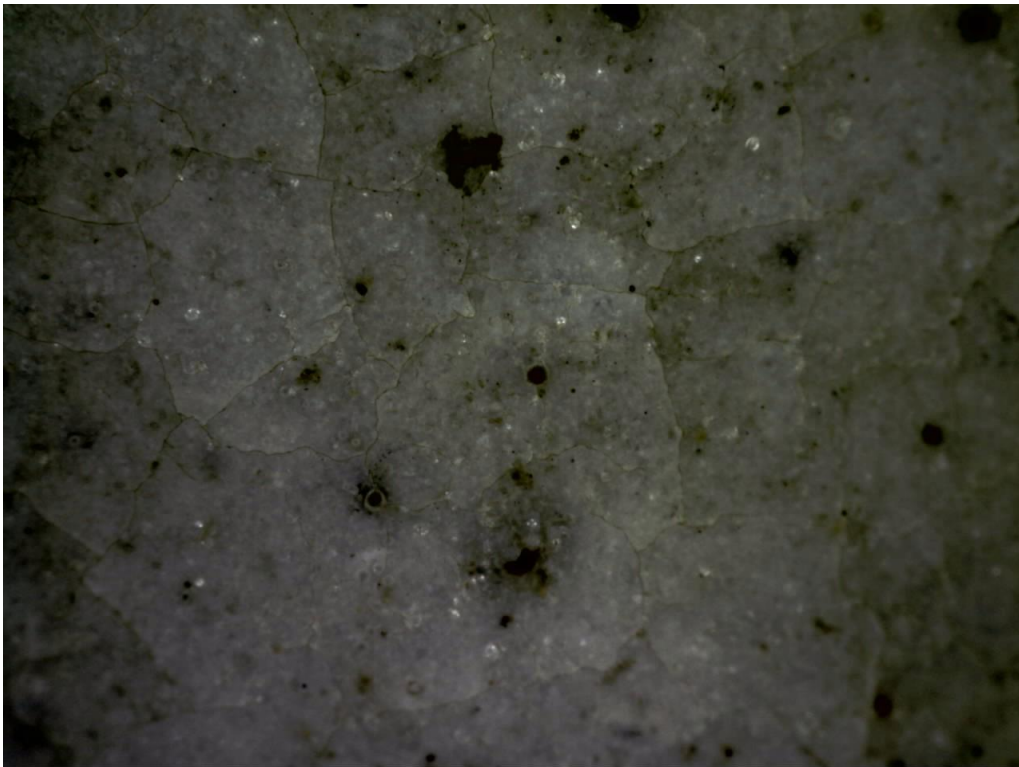
**Hand made foot rim**



**Hand painted design in monochrome brown ( $MnO_2$ )**

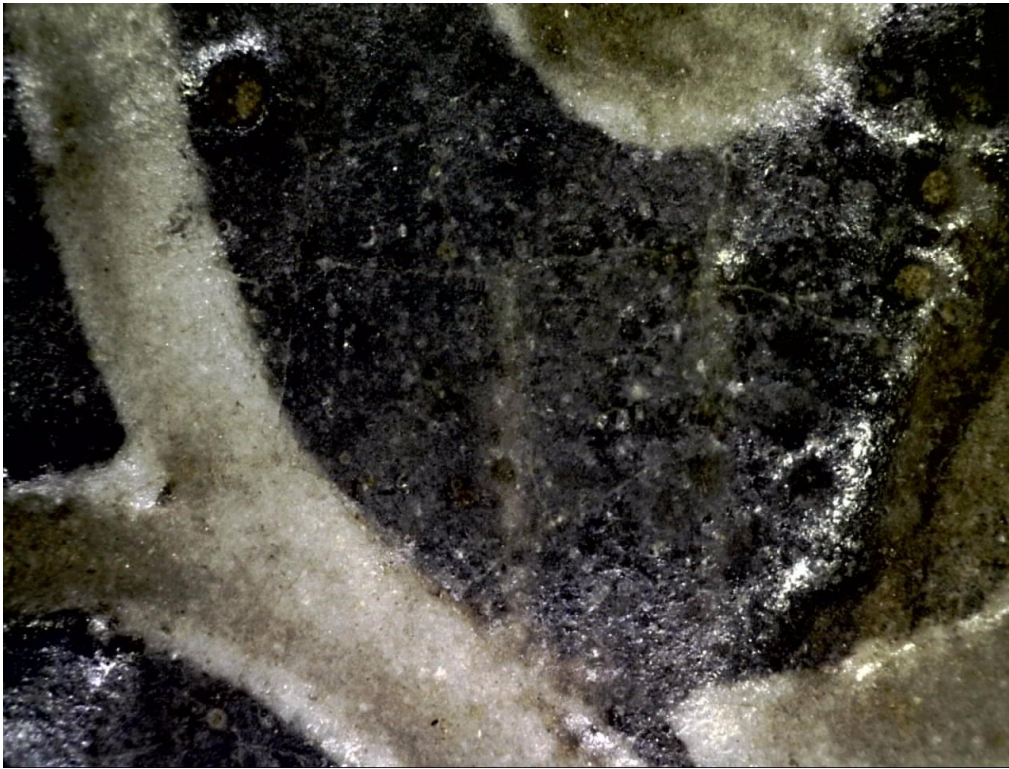


Design partial engraved (cut glaze technique)



Impurities and cracks in the glaze. (the dark ones are iron spots)





Engravings to the ground into the brown colored design.



Horizontal hand made manufacturing.

Core analysis by ICP-OES (fused dissolution HF HClO<sub>4</sub>)

Ident	% SiO <sub>2</sub>	% Al <sub>2</sub> O <sub>3</sub>	% Fe <sub>2</sub> O <sub>3</sub>	% K <sub>2</sub> O	% Na <sub>2</sub> O	% CaO	% MgO
28465	75,8	16,9	0.81	2.36	0.73	0,51	0.49

## References:

Period	% SiO <sub>2</sub>	% Al <sub>2</sub> O <sub>3</sub>	% Fe <sub>2</sub> O <sub>3</sub>	% K <sub>2</sub> O	% Na <sub>2</sub> O	% CaO	% MgO
Ming	71,6 - 76,0	18,3 - 21,2	07 - 1,6	2,8 - 4,2	0,15 - 2,0	0,3 - 1,2	0,15 - 0,3
Song	75 - 77,8	16,3 - 18,7	0,6 - 1,1	2,3 - 3,2	0,4 - 2,5	0,4 - 1,3	0,1 - 0,6
Qing	65,5 - 70,3	23 - 30	0,7 - 1,35	1,3 - 3,4	0,3 - 2,5	0,3 - 1,6	0,1 - 0,3

## Remarks:

Stone ware for daily use with typical incised designs in brown and white.

Type, method of manufacture and painting style were in use in the Northern Song dynasty( 12<sup>th</sup> century) and belongs to the Tz'u-Chou type ceramics.

Also confirmed by the chemical composition of the core material.

Overpelt, 25 feb 2016



Raymond Bové



Hebolabo Overpelt.